

CRUSH!

LAC COMPLETES PMC TAILINGS DAM SOUTH BUTTRESS FILTERS PROJECT



The LAC Civils Department handed over the PMC Tailings Dam South Buttress Filters project on Tuesday 29 June, a full two weeks before schedule. PMC Senior Project Engineer Fredl van der Merwe commended LAC for the work, calling it “a job well done”. In turn LAC’s Divisional Manager Wikus Erasmus has congratulated Ilanga Construction Projects for their efficient and effective work on the contract’s sub-contracted elements.



Work on this project commenced in early May and the rapid completion was possible through excellent team-work between LAC, Ilanga, Kenco and SMB, as well as careful machine utilisation. The work involved the removal of grass and capping material from the Tailings Dam bench (1). The cleared bench was then cut into to create a platform for the filter drains (2 and 3). A trench was then dug for the 450 HDPE decant pipeline and bedding preparation done (4). The filter drains were then connected to the decant (5). Concrete anchor blocks were constructed and the decant pipeline joints were wrapped with Denso (7). Finally, a



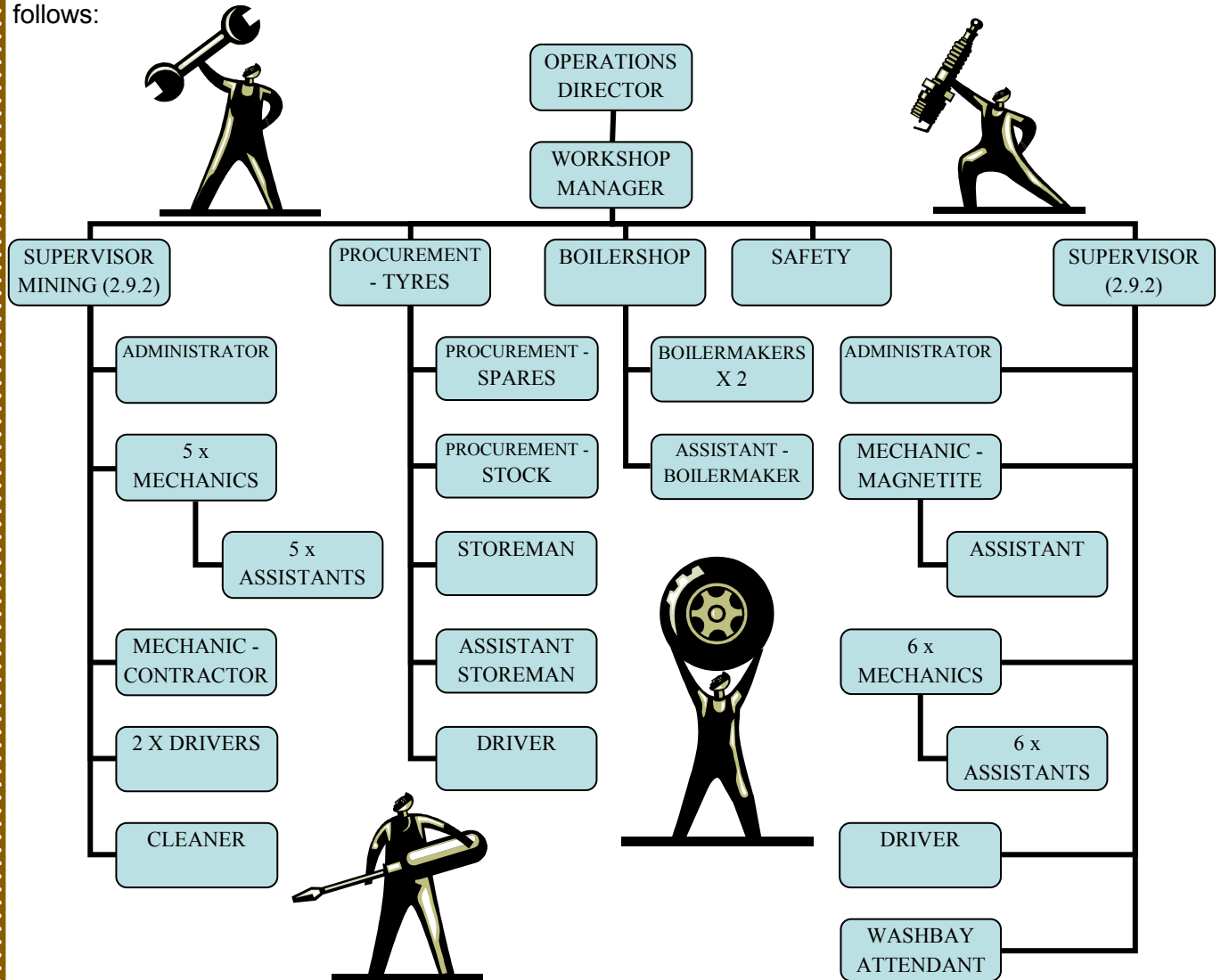
sand layer was placed over the filter drains (6).

The success of this project was greatly aided by the close, cooperative and much appreciated working relationship with PMC.



LAC WORKSHOP RE-STRUCTURED

Following the closure of Mpumalanga LAC is delighted to welcome Operations Director Bryan Smith back to Phalaborwa on a permanent basis. Bryan has assumed responsibility for the Workshop, whilst efforts to recruit a highly-qualified Workshop Manager continue. A full Workshop re-structure has been effected to take account of the specific requirements of new contracts such as those at Foskor Mining and VOD as well as the needs of the ramp-up of tonnages at Magnetite. The new structure looks as follows:



LOST TIME INJURY-FREE HOURS

LAC's next company target is one million lost-time injury-free hours. This is not a difficult target to achieve, but then neither is never suffering another disabling injury - ever. All it takes is for everyone to remain alert and look out for their own safety and that of everyone around them.

Together we can do this - and we must.

LTI-free hours to 15 June 2010 stood at **932,395 hours** with a DIFR rate of 0.

LAC AWARDED THE PMC SMELTER SECONDARIES CONTRACT

LAC was pleased to be awarded the contract at PMC for load and haul of smelter secondaries. This two year contract commenced in June 2010. We look forward to working with VOD to ensure sustained productivity on this site.





TUBERCULOSIS: FAST FACTS

- ◆ Tuberculosis (TB) is an infection, primarily in the lungs (a pneumonia), caused by bacteria called *Mycobacterium tuberculosis*. It is a highly infectious disease that mainly attacks the lungs but can attack the whole body.
- ◆ TB is usually spread from person to person by breathing infected air during close contact. It spreads when an infected person coughs, sneezes or speaks and releases infective droplets in the air.
- ◆ TB can remain in an inactive (dormant) state for years without causing symptoms or spreading to other people. However, when the immune system of a patient with dormant TB is weakened, the TB can become active (reactivate) and cause infection in the lungs or other parts of the body.
- ◆ The risk factors for acquiring TB include close-contact situations, alcohol and IV drug abuse, and certain diseases (for example: diabetes, cancer, and HIV).
- ◆ The most common symptoms of TB are fatigue, fever, weight loss, coughing (often lasting for weeks and sometimes containing blood), and night sweats. TB can be diagnosed through skin tests, chest X-rays, sputum analysis (smear and culture), and PCR tests to detect the genetic material of the causative bacteria.
- ◆ Inactive tuberculosis may be treated with an antibiotic to prevent the TB infection from becoming active. Active TB is treated, usually successfully, with an antibiotic in combination with one or more of several drugs.
- ◆ Drug-resistant TB is a serious, as yet unsolved, public-health problem. Poor patient compliance, lack of detection of resistant strains, and unavailable therapy are key reasons for the development of drug-resistant TB. If any of your friends or family are on TB therapy please encourage them to take their drugs correctly and finish the course completely in order to avoid the recurrence of the TB. Positive peer pressure can be most helpful, so be supportive!
- ◆ The occurrence of HIV has been responsible for an increased frequency of TB. Effective control of HIV would substantially decrease the frequency of TB.



WELCOME!

To the following new employees:

- JM Masebe
- C Ngwenya
- JM Malapane
- IH Sethema
- KR Mokgotha
- MM Boase
- MB Mamahlodi
- VS Sigwija
- SI Mashiteng
- MD Maduna
- WM Malatji
- BS Malaza
- K Masetla
- EB Tibane
- ZS Sigwija
- WD Shikwambane
- ST Madire
- ZJ Nkabinde
- JA Mulambo
- SS Ngwane

We look forward to working with you!

“Change yourself and your work will seem different” Norman Peale

PROMOTIONS!

Congratulations to Samuel Sepatake who has been promoted to Supervisor at Phosphate Materials Handling. We wish him every success with his new duties. Samuel is pictured (second from left) with his shift. We would also like to congratulate Rufus Machimane on his promotion to Trainee Supervisor. Keep up the good work!



EXPIRY DATES: MEDICAL AND INDUCTION CARDS



The Safety Department has a system for monitoring the expiry dates of employees' mine medical and induction cards. This system is used to ensure that medicals and inductions are booked in good time and that cards are renewed well before they expire. However, the onus remains on each employee to notify their supervisor if they have not been informed of dates for refresher medicals or inductions by two weeks before their cards are due to expire. Failure to do so may result in disciplinary action, so please check your cards today!

CAMPFIRE CHAT

This month we sit down with Willie Myers (pictured here 3rd from left with his family) to find out a little more about our newest manager. Willie is LAC's Site Manager at Foskor Mining.



1. How long have you been with LAC and

what did you do before? WM- I worked for Harmony Gold mine in the free state from 1985-2004 as a mine overseer underground. After that I joined ALS Mining and worked on several opencast mines for them as a site manager until I joined LAC in February 2010.

2. How does Phalaborwa differ from other places you have lived?

WM- I was born in Lydenburg and grew up on a farm in Steelpoort. I like Phalaborwa because of the nice bushveld surroundings and I have met a lot of nice people here.

3. Which three words best describe you?

WM- Honest, Reliable, Dedicated

4. What is the best piece of advice you were ever given?

WM - Do unto others as you would like them to do unto you.

5. What qualities make an employee most suited to work on the Mining site?

WM - The ability to stay positive whatever is thrown at you. You must be able to make decisions on your own.

6. If you hadn't chosen your current career what do you think you would have done? WM - Been a game ranger.

7. What do you like to do in your spare time? WM - I am a qualified professional hunter and if there is a thing like spare time I take clients out on hunting trips. I like to hunt myself and do a bit of fishing.

8. Three ambitions/things that you still have left to do in life?

WM - Complete my Mine Manager's certificate, own a game farm and a place by the sea.

9. Your job is very pressured. Assuming you ever get the time, what would be your ideal holiday? WM - Touring Africa with a 4 x 4 and my family. I like the bush and the silence that goes with it.

10. If you could invite any four people to your braai, living or dead, who would they be? WM - My grandfather, my father and the Blue Bulls rugby team.

11. Do you have a braai tip for us? WM - Don't over-cook the meat or you will lose the tenderness. I use Worcestershire sauce and Aromat to bring out the meat's flavour.

12. Who is going to win the World Cup? WM- I am not a big soccer fan but I will say the Netherlands.



AS THE WORLD CUP DRAWS TO A CLOSE.....

..... Management would like to take this opportunity to commend the workforce of LA Crushers for not allowing the World Cup to interfere with the safe and efficient carrying out of their duties. South Africa can rightly be proud of the way that it hosted the tournament and we can all be proud of having our priorities straight and not allowing the excitement to have a negative impact on our productivity. A great result all round. It has been a wonderful few weeks, but who is going to lift the trophy in the end?



IT'S A GOOD TIME NOT TO BE ENGLISH.....

It is no secret that your Editor is an English lass, though her patriotism mercifully does not extend to supporting the English soccer team. Which is a good thing, given some of the observations going around, like:



- ◆ What's the difference between the England team and a tea bag? A tea bag stays in the cup longer.
- ◆ The England team visited an orphanage in Cape Town. "It's heartbreaking to see their sad little faces with no hope," said Jamal, aged six.
- ◆ What do you call an Englishman in the knockout stages of the World Cup? A referee.
- ◆ David Blaine is reportedly furious after England crashed out of the World Cup – his record of doing absolutely nothing in a box for 42 days was broken by Wayne Rooney.
- ◆ Osama Bin Laden has just appeared in a new T.V. message proving he is still alive. He said, "The English football team were crap again". British intelligence have dismissed the message, saying it could have been recorded at any time in the last 44 years.



IN SYMPATHY: We extend deepest condolences from all at LAC to Luckson Makhubela, whose sister passed away; Douglas Nukeri, whose mother passed away; Golden Maluleke, whose father passed away; and Ezekiel Mokgalaka, whose father passed away.

